




Storage & Handling

- Keep the product refrigerated to maintain maximum shelf life.
- Do not store above 40°F (5°C). Do not freeze. Best use before date on label.
- Do not use if the packaging has been damaged, or if the seals are found to be broken or open.
- 20% initial concentration of hydrogen peroxide. The concentration may change due to the nature of peroxide and this unique formulation.

Shelf Life: 18 months

	Attention - Refer to the instructions for use and complete information.
	Oxidizer - Avoid contact with reactive substances.
	Storage Temperature - Store product at the indicated temperature.

Complete Application Instructions

SHEER
WHITE![®]
In-Office

Patent Pending

Caution: U.S. Federal law restricts this product to sale by or on the order of a licensed professional.

Disclaimer: CAO Group believes this information to be accurate and is offered only for the benefit of its customers for use of the product under proscribed conditions. This document is not to be considered a warranty or guarantee of product performance, and CAO Group is not legally bound to such claims based on this document.

Manufactured by CAO (China) Medical Equipment Co., Ltd. for



CAO GROUP, INC.
Easier · Faster · Better™

P 877.236.4408 F 801.256.9287

4628 West Skyhawk Drive, West Jordan, UT 84084-4501 U.S.A.

www.caogroup.com

Simple. Brite. White.®

20% Hydrogen
Peroxide Whitening Film

Description and Use

Sheer White![®] In-Office whitening films are the most comfortable, office friendly whitening system available today. The conformal sealing technology requires minimal if any tissue isolation and keeps peroxide on the teeth for rapid, convenient results. Films are worn for up to 30 minutes. A second application can be made if desired. Films can be cut/trimmed as needed for optimal placement or single-tooth treatment.

Assess teeth for caries or other conditions prior to use. Perform restorative procedures prior to whitening, keeping in mind shade matching of restorations with post-whitening teeth shades. Perform cleaning prior to whitening. If patient is known to have sensitivity, apply or prescribe a sensitivity treatment prior to whitening. Advise patient that if during use they experience discomfort, to inform staff immediately. Cheek retraction and tissue isolation may be applied before use if there is concern about risks to these tissues. Patient may remain in the chair, or return to the lobby while wearing the films.

Counter Indications

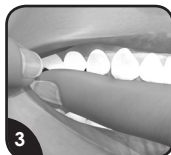
- Avoid contact with eyes. If contact occurs flush with copious amounts of water. Contact a physician immediately.
- Avoid contact with skin. If contact occurs flush with copious amounts of water. If redness or irritation persists, contact a physician.
- Avoid direct contact of the active surface of the film with the gums and/or salivary flow.
- Not for use on women who are pregnant or nursing.
- Not for use on children under 18 years of age.
- Avoid contact with clothing.
- If irritation (such as redness, swelling, soreness, or blanching) of the gums or mouth occurs, discontinue use and treat the affected tissues.
- Do not use if allergic to hydrogen peroxide.
- Not recommended for patients with severe gingivitis or periodontitis. Treat these conditions before whitening.
- Whitening will not affect porcelain crowns and veneers, tooth colored acrylic restorations or amalgam.
- Do not use lights, heat, or other methods to accelerate the whitening process.
- Do not combine this product with other in-office whitening products as unexpected reactions may occur.



1 The whitening side of the film faces UP. Grasp film at end and remove as shown.



2 Center film and place against teeth with edge just under the gum line.



3 Pull cheek away and push film onto back teeth.



4 Fold film to back side of teeth. Press firmly on all surfaces. Work the upper edges to follow contours. Work the film into interproximal gaps.



5 **Wear
Up to 30 min**



6 To remove, grasp one corner and pull down away from front of teeth, then push film away from back of teeth.



7 Brush or rinse away any remaining gel, with suction. Rinse to sink.